

# PALM ISLES RECREATION PARCEL

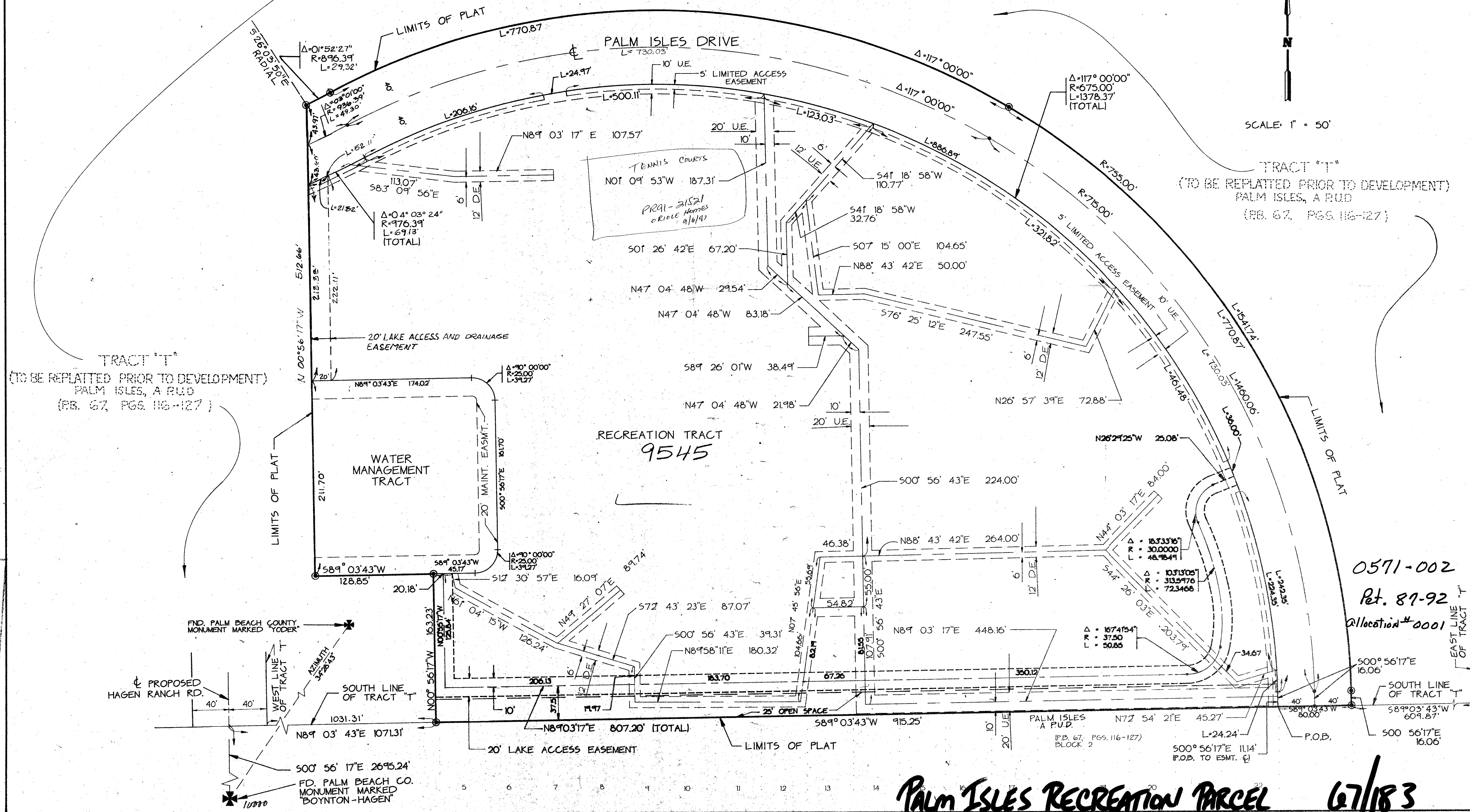
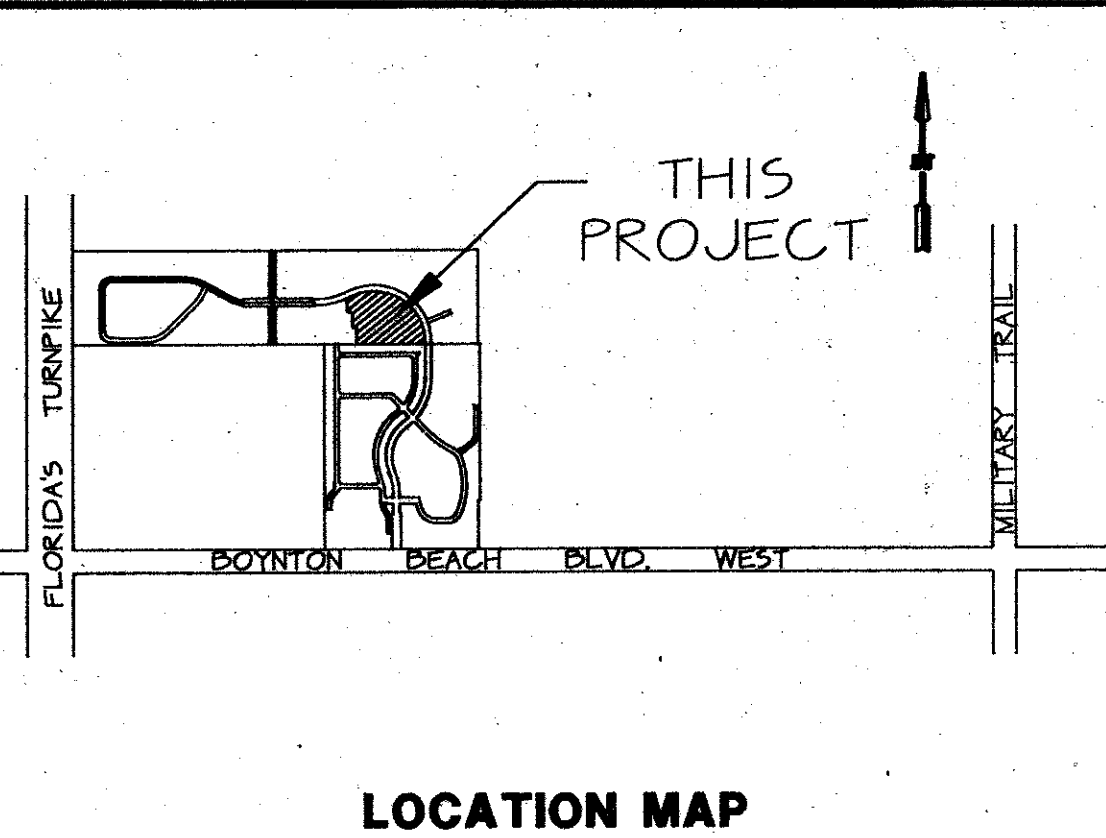
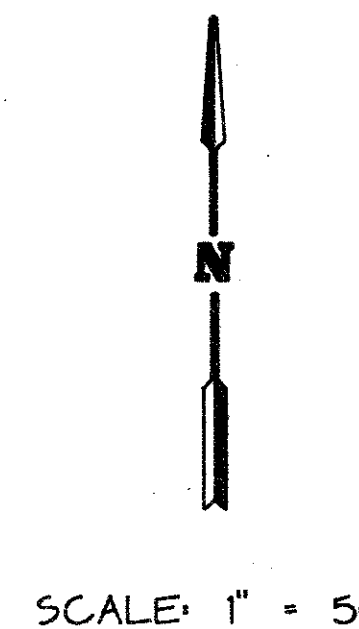
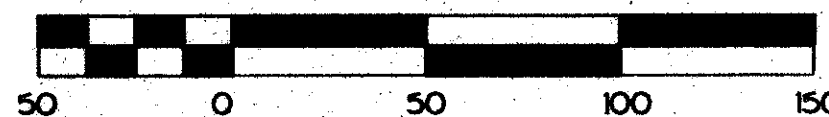
571-002

A REPLAT OF A PORTION OF TRACT T, 'PALM ISLE P.U.D.' AS RECORDED IN PLAT BOOK 67, PAGES 116 THROUGH 127 OF THE PUBLIC RECORDS OF PALM BEACH COUNTY, FLORIDA

SECTION 21, TOWNSHIP 45 SOUTH, RANGE 42 EAST PALM BEACH COUNTY, FLORIDA

SHEET 2 OF 2

THIS INSTRUMENT PREPARED BY JAMES E. PARK, P.L.S. WILLIAMS, HATFIELD & STONER, INC. - ENGINEERS PLANNERS SURVEYORS 1325 SOUTH CONGRESS AVENUE, SUITE 118, BOYNTON BEACH, FLORIDA 33426



TAL 760  
BOOK 67  
PAGE 116  
FLOOD ZONE B  
ZONING RS  
CASE # 50  
SE 87-92  
PUD NAME PALM ISLES

0571-002  
Pt. 87-92  
Allocation #0001

PALM ISLES RECREATION PARCEL 67/183